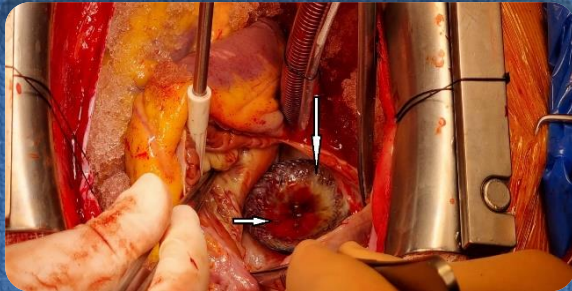
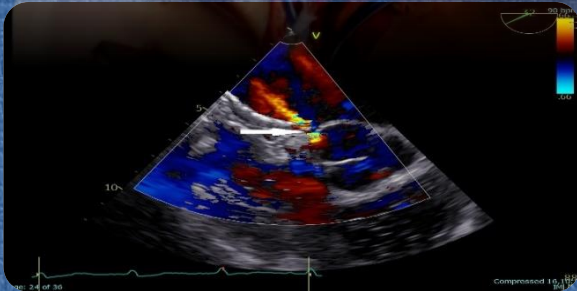
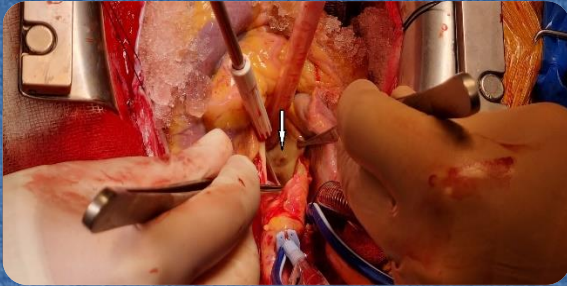


E-ISSN 2147 – 0758

KOCAELI MEDICAL JOURNAL

VOLUME 14 ISSUE 2 YEAR 2025



Challenges of Technology Use in Patients with Dementia: A Study on Telephone Use and Review of the Literature

Evaluating Platelet Indices, Inflammatory Markers, and the Systemic Immune-Inflammation Index as Predictors of Erythrocyte Suspension Transfusion in Total Abdominal Hysterectomy: A Matched Cohort Study

The Survival Effect of Malnutrition, Frailty, and Cachexia in Unresectable Pancreatic Cancer Patients Received First-Line Systemic Treatment: A Single-Center Prospective Cohort Study

Comparing the Three Endocervical Sampling Methods: Which Method is Sufficient For Diagnostic Tissue Quality?

Evaluation of Code Blue Practices in Our Hospital: Retrospective Study

Role of Serum Albumin-to-Creatinine Ratio as a Predictor of 30-Day Mortality in Geriatric Intensive Care Unit Patients

Prognostic and Predictive Value of the Non-HDL Cholesterol/HDL Cholesterol Ratio in Patients with Stent Thrombosis Presenting with ST-Segment Elevation Myocardial Infarction

Identification of Vaginitis-Causing Microorganisms Isolated From Vaginal Discharge Cultures and Evaluation of Their Antimicrobial Susceptibility Profiles

Intravascular Hemolysis Due to Aorto-Atrial Fistula After Percutaneous Atrial Septal Defect Closure



The Official Journal of Kocaeli Derince Training and Research Hospital



KOCAELI MEDICAL JOURNAL

• ***VOLUME 14***

• ***ISSUE 2***

• ***YEAR 2025***

CONTACT

Kocaeli Derince Eğitim ve Araştırma Hastanesi, İbnisina Mahallesi, 41900
Derince/Kocaeli, TÜRKİYE

Tel: 0262 317 80 00 (Extension 2995)

E-mail: kocaelimedicaljournal@gmail.com

Indexed in Turkish Citation Index and ULAKBİM Turkish Medical Database.

**© All rights are reserved. Rights to use and reproduce belong to Kocaeli Derince
Training and Research Hospital.
It is published three times a year.
Release date: August 2025.**