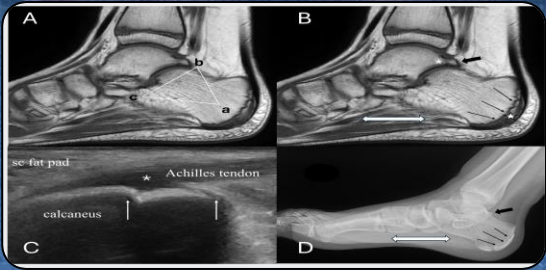
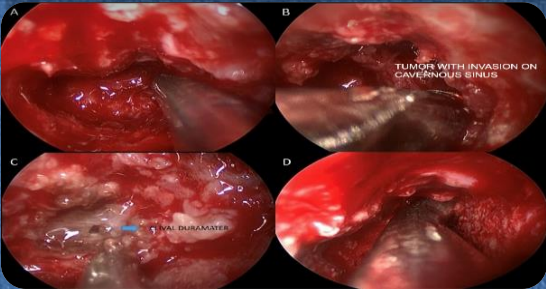
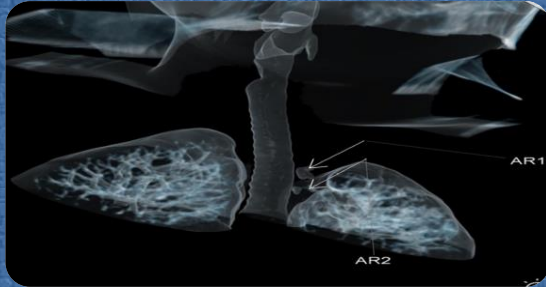


# KOCAELI MEDICAL JOURNAL

VOLUME 14 ISSUE 1 YEAR 2025



*Coexistence of Sever's Disease, Os Trigonum Syndrome, and Pes Planus: The Bermuda Triangle of Foot Pain*

*Mental Model Concept for Critical Airway Management*

*Fatigue Levels of Chronic Obstructive Lung Disease and Asthma Patients*

*Effect of Methylphenidate on Static Balance and Risk of Falling in Children with Attention Deficit Hyperactivity Disorder*

*Association of Alzheimer's Disease with Variables in Peripheral Blood Count*

*Turkish Parental Attitudes Towards COVID-19 Vaccines for Their Children*

*Relationship Between uMMP7 and Prognosis, Comorbidity and Mortality in Acute Kidney Injury*

*Evaluation of Adherence to the Mediterranean Diet and Physical Activity Status in Pregnant Women Diagnosed with Gestational Diabetes Mellitus*

*Determination of Compassion Fatigue in Intensive Care and Palliative Care Nurses: A Scale Development Study*

*Ultrasonographic Evaluation of Biceps Muscle thickness and Cutaneous Stiffness in Breast Cancer Related Lymphedema*

*Evaluation of the Correlation Between Arterial Stiffness and Capillaroscopic Findings in Patients with Rheumatoid Arthritis*

*The Youngest Case of Clival and Suprasellar Atypical Teratoid/ Rhabdoid Tumor Treated with an Endoscopic Endonasal Approach and a Review of the Literature*





# **KOCAELI MEDICAL JOURNAL**

● **VOLUME 14**

● **ISSUE 1**

● **YEAR 2025**

## **CONTACT**

Kocaeli Derince Eğitim ve Araştırma Hastanesi, İbnisina Mahallesi, 41900  
Derince/Kocaeli, TÜRKİYE

**Tel:** 0262 317 80 00 (Extension 2995)

**Faks:** (90-262) 233 55 40

**E-mail:** [kocaelimedicaljournal@gmail.com](mailto:kocaelimedicaljournal@gmail.com)

**Indexed in Turkish Citation Index and ULAKBİM Turkish Medical Database.**

**© All rights are reserved. Rights to use and reproduce belong to Kocaeli Derince  
Training and Research Hospital.**

**It is published three times a year.**

**Release date: April 2025.**